



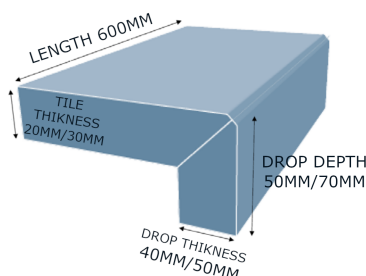
Pool Coping

Pool coping is the material used to finish the top edge of your swimming pool.

Requirements

You are to provide the correct size material to suit this nominated coping width and will allow for a 50mm overhang.

For example, a 200mm walkway will need a 250mm bull nose. This slight overhang will provide the right aesthetics for your interior lining to come up the wall and finish underside.



DROP FACE
REQUIRES
A MINIMUM
OF 50mm
OVERHANG

NOTE: It is important to not lay coping over 2 different structures.

Bond Beam & Tile Width

The width of bond beam and tile width have to suit each other:

- 200mm bond beam - 250mm coping tile
- 360mm bond beam - 400mm coping tile
- 560mm bond beam - 600mm coping tile
- 860mm bond beam - 600 + 300mm body paver

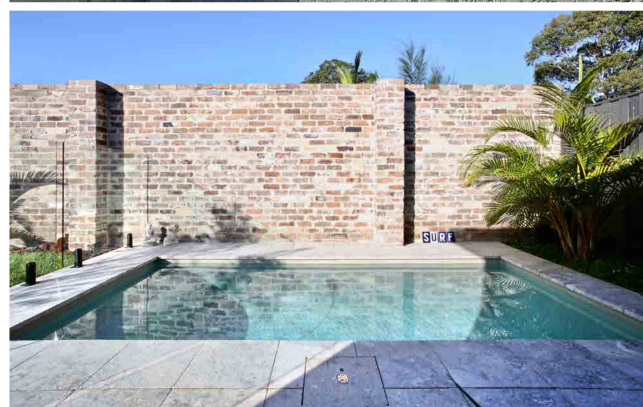
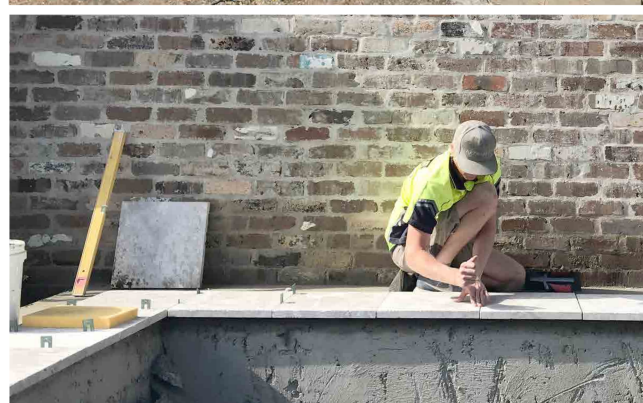
Tile Cutting

We don't cut each tile to size by hand.

- The cutting is required by factory when you order your tiles (from supplier)
- Allow for wastage if planning for smaller cuts or specific patterns. Hand cuts required for free-form pool shape so you need to plan for wastage.

Profile

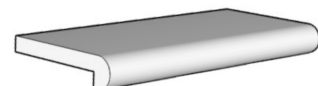
- **BULL NOSE OR ROLLED EDGE:** Flat and smooth with a rounded edge at the end. Good for free-form pools.
- **REBATED BULL NOSE:** Flat with a large rounded edge at the end. Good for diving from or for holding onto from inside the pool
- **SQUARE EDGE:** Flat surface with no sharp edges. Easier edge to get in and out of the pool with
- **DROP FACE OR REBATED SQUARE EDGE:** This coping runs out flat then drops at a 90-degree angle over the water in an L - shape. Classic and modern look. More decorative and perfect to modern formal pools.
- Must be at least 50mm dropface.



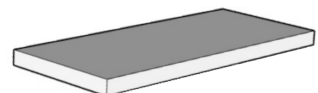
BULL NOSE



REBATED BULL NOSE



SQUARE EDGE



DROP FACE

